

## Why is QA/Accreditation Important FOR YOU?

CUFE has always been a leading institution in the Arab World (Established in 1905 as the first Engineering School in Egypt and the Arab region).

In 2018, CUFE ranked **250 within the Engineering Institutions in the world**, and ranked the **1<sup>st</sup> in Egypt and Africa** according to QS.

CUFE aims at continuously improving its position among national and international institutions, and this requires continuous self-assessments to detect points of strength and/or weakness and work on them. That is why the QAAU is working on a multitude of activities to achieve this goal. One means of doing this, is through surveys managed by QAAU including ILOs, Instructors and Exit surveys.

### REMEMBER

- \* Being a graduate from an accredited institution maximizes your chances to get job offers and be sought after by national / international employers.
- \* The accreditation of your institution facilitates your mission if you would like to continue your undergraduate/postgraduate studies in another international institution.



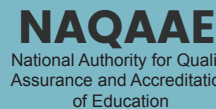
### National and International Accreditations

CUFE labs, departments & programs started the steps towards national and international accreditation:



In 2017, the Department of Architecture was **unconditionally revalidated for 5 years** by the UNESCO-UIA Validation Committee.

In 2016, AET, the Architecture Credit Hours Based Program, was validated for 3 years by the UNESCO-UIA Validation Committee.



In 2016, CUFE was **accredited, as an institution**, by NAQAAE Accreditation of Institutions **for 5 years**.

EECE was accredited as a **department**, by NAQAAE Accreditation from 2013 to 2018.



The Master's degree programme "Renewable Energy and Energy Efficiency for the MENA Region" is accredited by ASIIN, from June 28<sup>th</sup>, 2013 and limited until September 30<sup>th</sup>, 2018.

### Accredited Labs

Irrigation and Hydraulics Lab  
ISO/IEC 1705:2005  
Measurement & Calibration Lab  
ISO 17025  
Mechanical Testing Lab  
ISO 17025  
Medical Equipments Calibration  
ISO 17025



وحدة ضمان الجودة  
كلية الهندسة . جامعة القاهرة

Quality Assurance and Accreditation Unit (QAAU)  
Faculty of Engineering . Cairo University

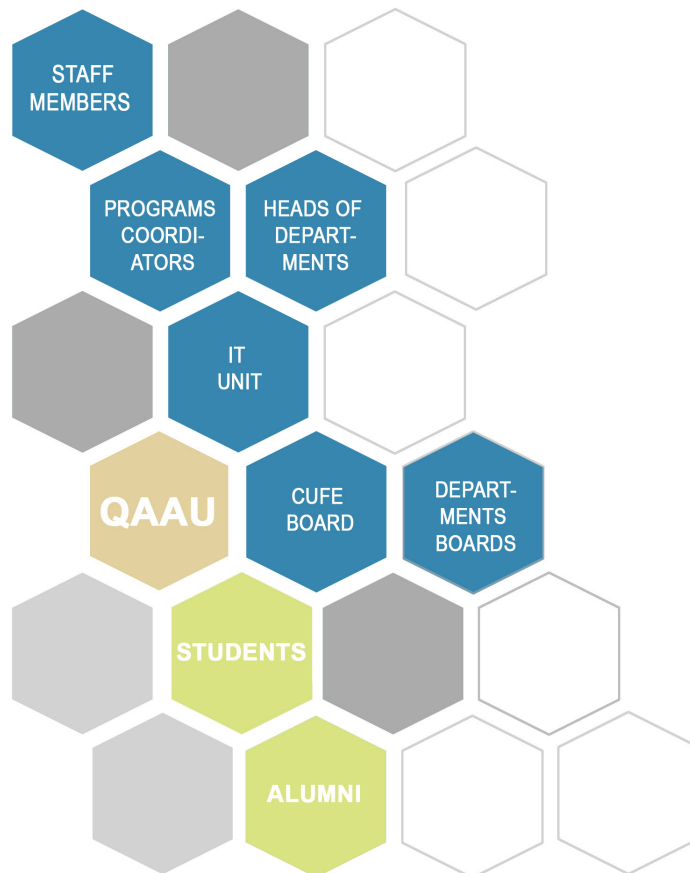


## What is Quality Assurance & Accreditation Unit (QAAU)?

QAAU is the unit responsible for acquiring the culture of continuous improvement and total quality assurance through increasing the understanding of the concept of quality and spreading quality awareness among CUFE academic, administrative as well as student community.

QAAU activates and monitors the quality assurance procedures in all the education system components in CUFE. It also assists the institution and its various programs in their steps towards international, regional and local accreditation and recognition.

QAAU is an intertwined effort of the following parties to ultimately improve the outcomes of the education process.



## STRATEGIC GOALS OF CUFE QAAU

QAAU strategic goals include

The development and implementation of an evaluation system for: students; courses and educational programs at CUFE.

Full and realistic diagnosis of the performance limitation at the Faculty level and proposing and developing solutions and plans for continuous improvement in various areas.



وحدة ضمان الجودة  
كلية الهندسة . جامعة القاهرة

Quality Assurance and Accreditation Unit (QAAU)  
Faculty of Engineering . Cairo University

Your Feedback Matters  
**CONTACT US**

Please fill out the online survey at our faculty website [www.eng.cu.edu.eg](http://www.eng.cu.edu.eg) within the first 2-3 weeks to share any comments or feedback related to courses or venues or any activities you would like to participate in.

Call us

Office: +202-35678331

Cell: (+20) 01274552205

Meet us

Quality Assurance and Accreditation Unit –  
Administration Building – Ground Floor  
Faculty of Engineering, Cairo University

Prof. Dr Sherine Wahba, QAAU Head

Dr Tamer Elserafi, QAAU Member

Dr. Mahmoud Tash, QAAU Member

Dr. Hossam Abdelgawad, QAAU Member

Email us

[qaau.cufe@gmail.com](mailto:qaau.cufe@gmail.com)

